

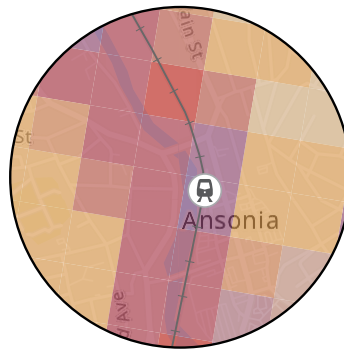
## Resilience Opportunity Areas Process



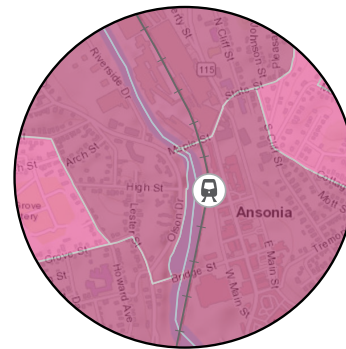
FEMA Flood Zones & CIRCA 1% Annual Chance 2050



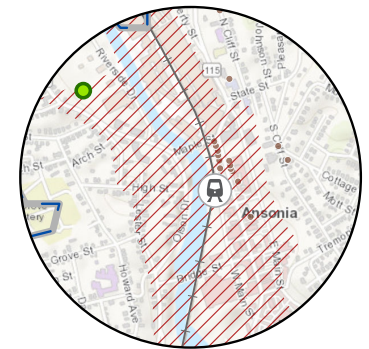
Zones of Shared Risk with Hazard Mitigation Project Locations



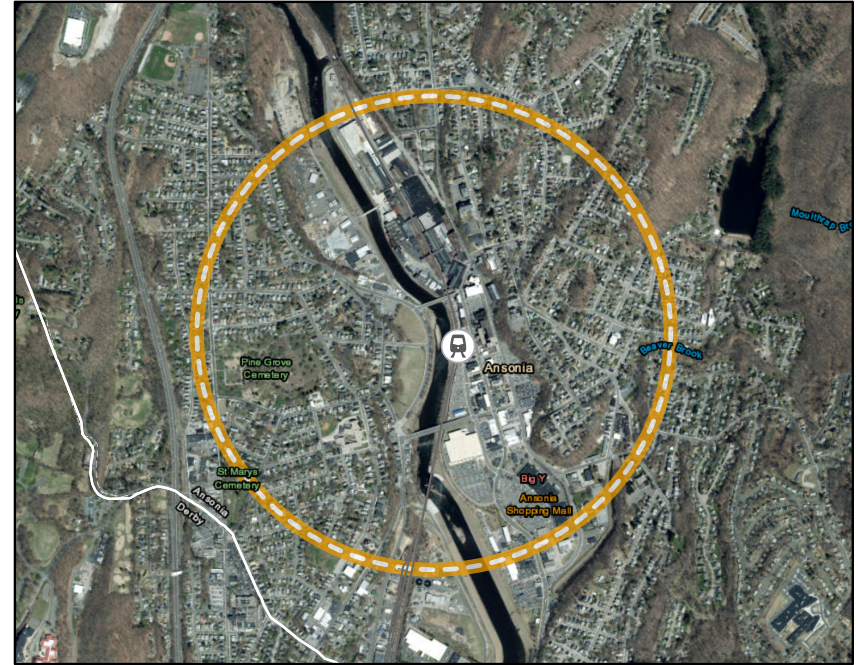
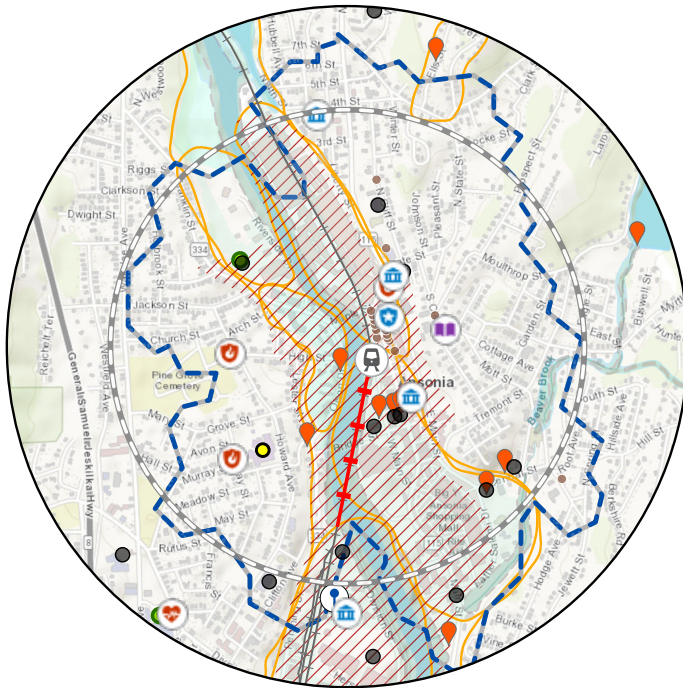
Climate Change Vulnerability Index (CCVI)



Overall Social Vulnerability



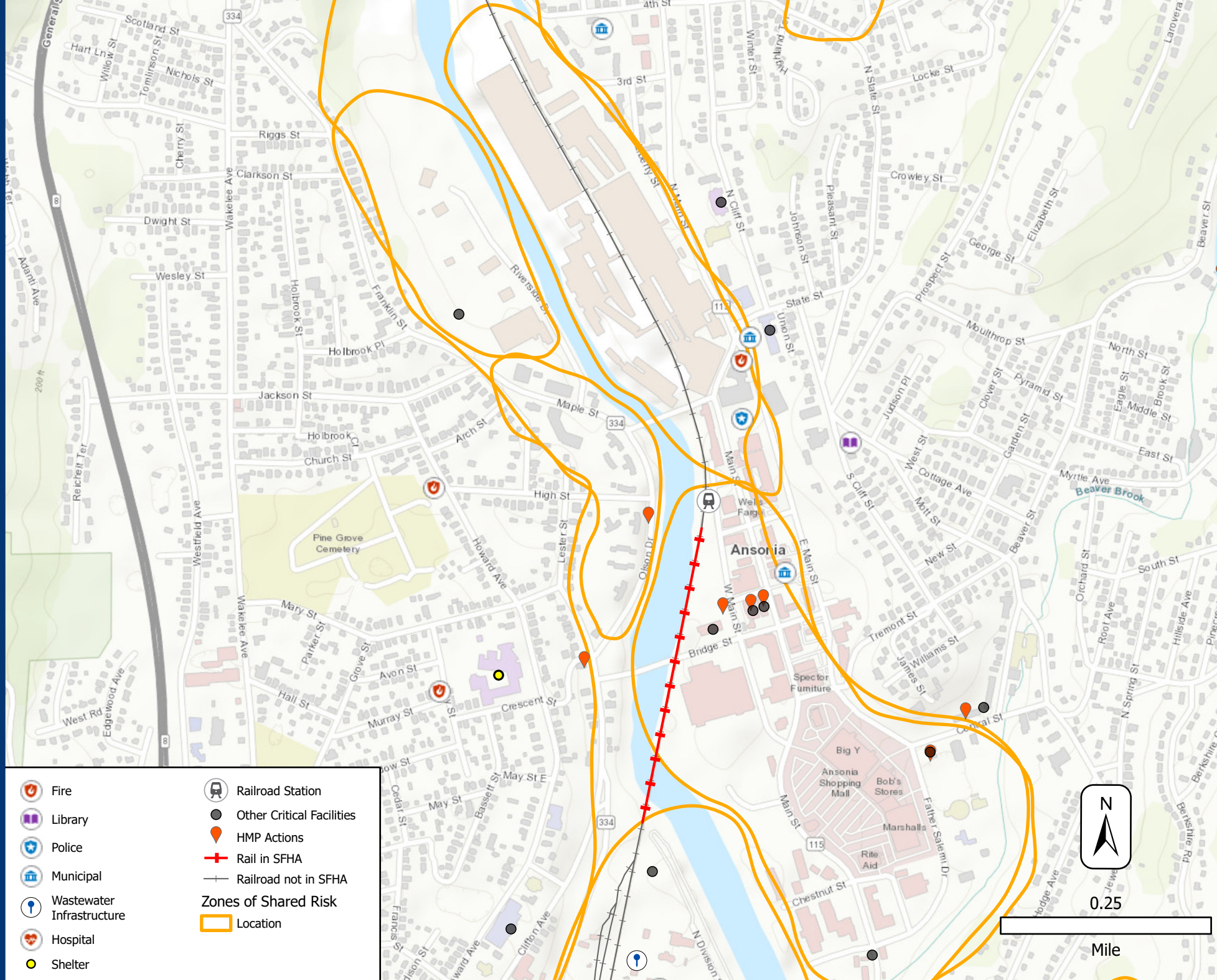
Planned Development Area & Historic Resources



Esri, HERE, Garmin, SafeGraph, GeoTechnologies, Inc., METI/NASA, USGS, EPA, NPS, US Census Bureau, USDA, Esri, HERE, Garmin, GeoTechnologies, Inc., MassGIS, UConn/CTDEEP, Esri, HERE, Garmin, GeoTechnologies, Inc., USGS, METI/NASA, EPA, USDA, State of Connecticut, Maxar



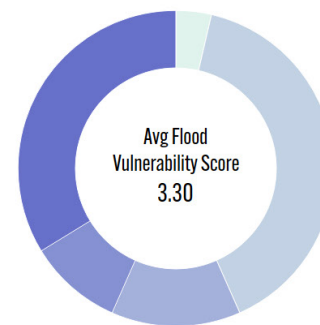
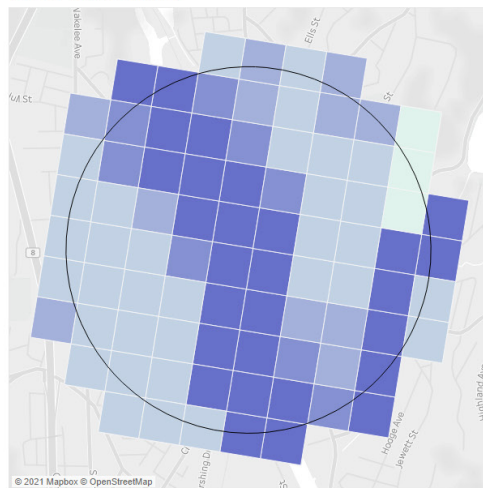
- |  |                                     |  |                           |
|--|-------------------------------------|--|---------------------------|
|  | Area with Reduced Risk Due to Levee |  | Police                    |
|  | 0.2% Annual Chance Flood Hazard     |  | Municipal                 |
|  | 1% Annual Chance Flood Hazard       |  | Other Critical Facilities |
|  | Regulatory Floodway                 |  | Wastewater Infrastructure |
|  | Fire                                |  | Shelter                   |
|  | Library                             |  | Railroad Station          |
|  | Rail in SFHA                        |  | Railroad not in SFHA      |



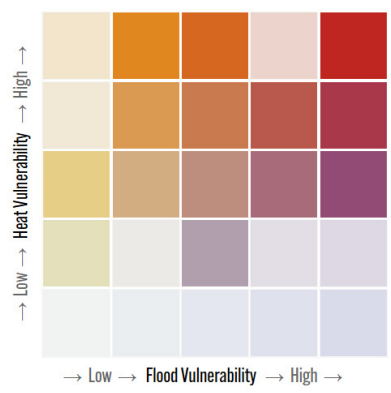
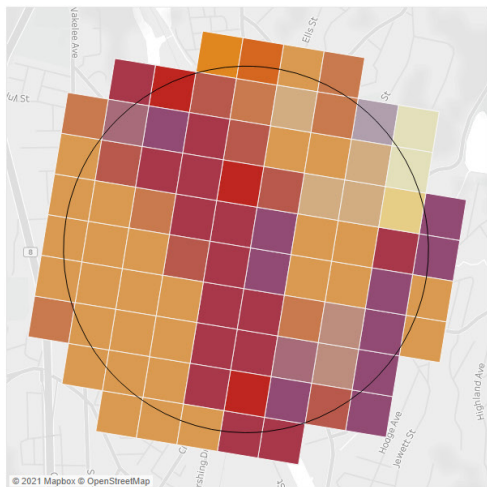
# Ansonia



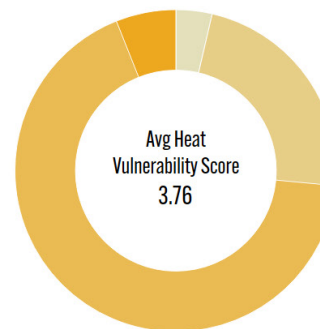
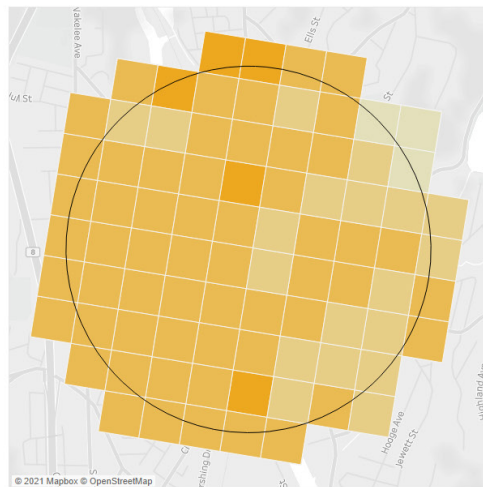
Flood Vulnerability

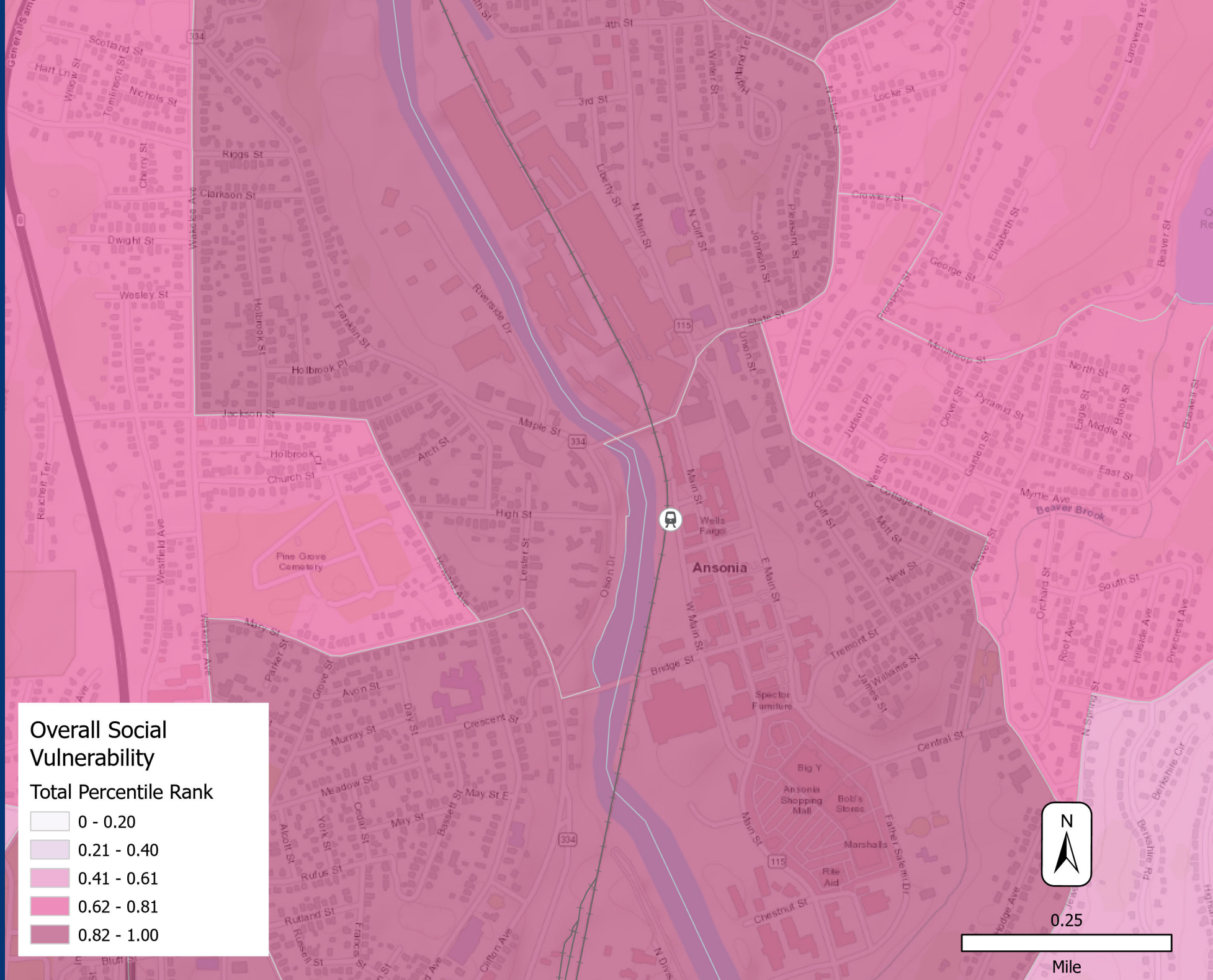


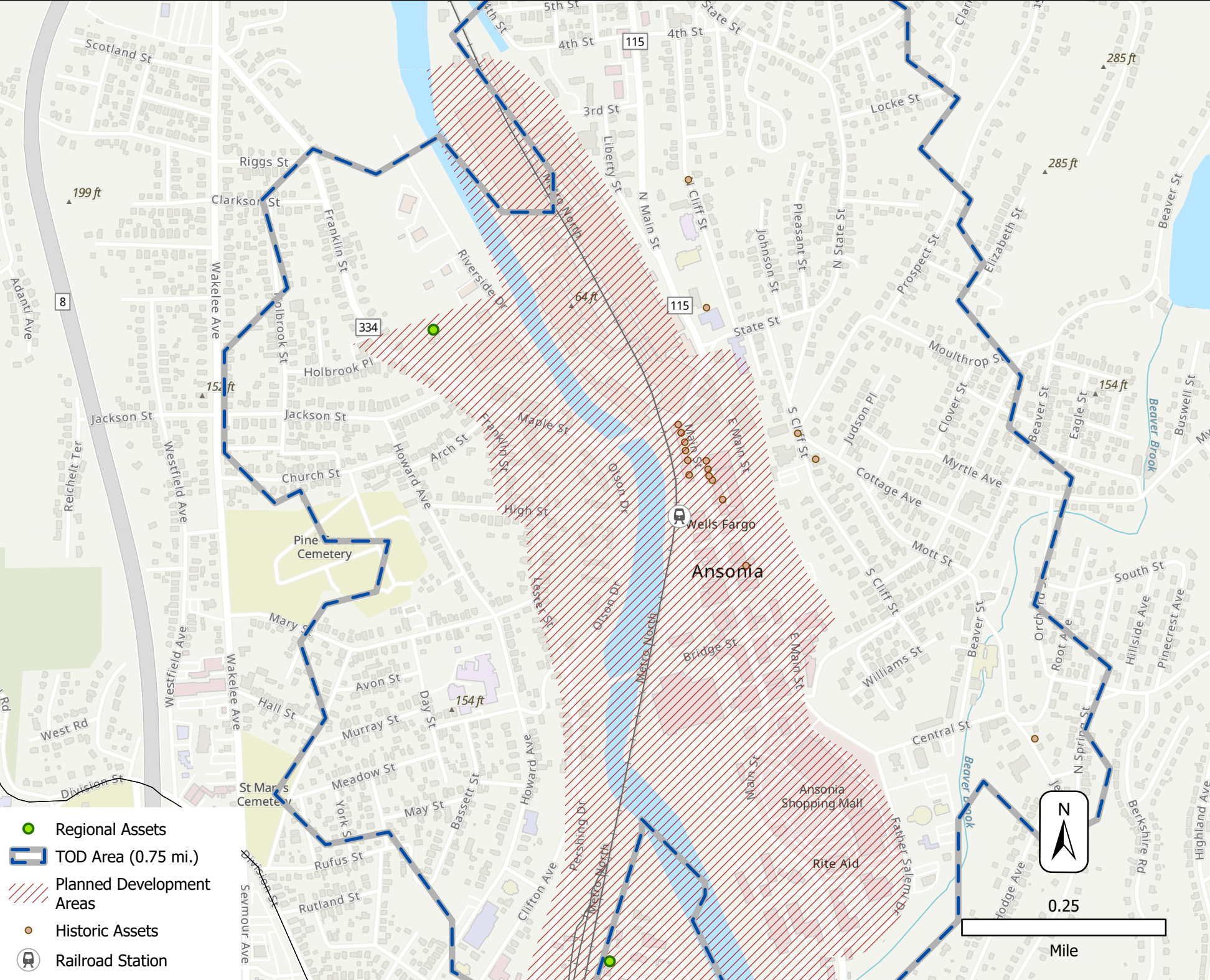
Combined Vulnerability



Heat Vulnerability







- Regional Assets
- TOD Area (0.75 mi.)
- Planned Development Areas
- Historic Assets
- Railroad Station

**Resilience Opportunity Area Scenario**

- TOD
- Fire
- Library
- Police
- Municipal
- Wastewater Infrastructure
- Shelter
- Hospital
- Railroad Stations
- Other Critical Facilities
- Historic Assets
- Regional Assets
- HMP Actions
- Rail in SFHA
- Railroad not in SFHA
- TOD Area (0.75 mi.)
- Planned Development Areas

**Zones of Shared Risk**

- Location
- Area with Reduced Risk Due to Levee
- 0.2% Annual Chance Flood Hazard
- 1% Annual Chance Flood Hazard
- Regulatory Floodway

